



# Riverfront Greenway Trail Extension North : Montgomery Lions Club: Children's Sensory Trail



**THE LIONS CLUB RIVERFRONT PATHWAY:** this segment of Montgomery's Riverfront path, the Children's Sensory Trail, has been planned, designed and engineered with the generous support of the Montgomery Lions Club. When built, it will create a uniquely delightful experience, especially for sight-impaired children, along the Alabama Riverfront trail. This trail entails opportunities for sensory learning and play, as well as engagement with nature.

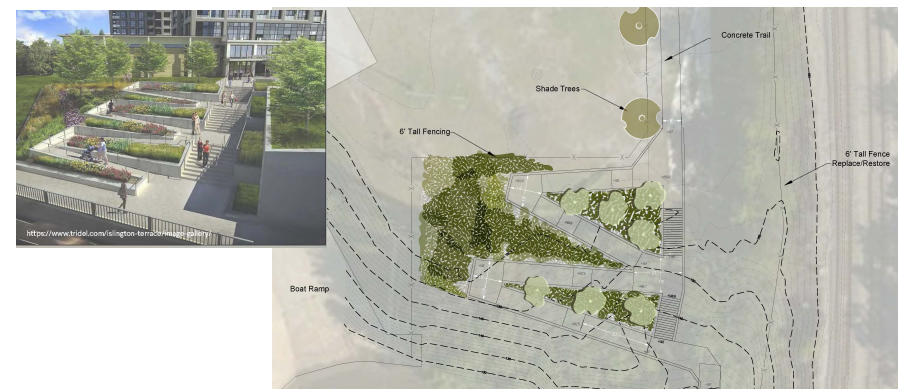
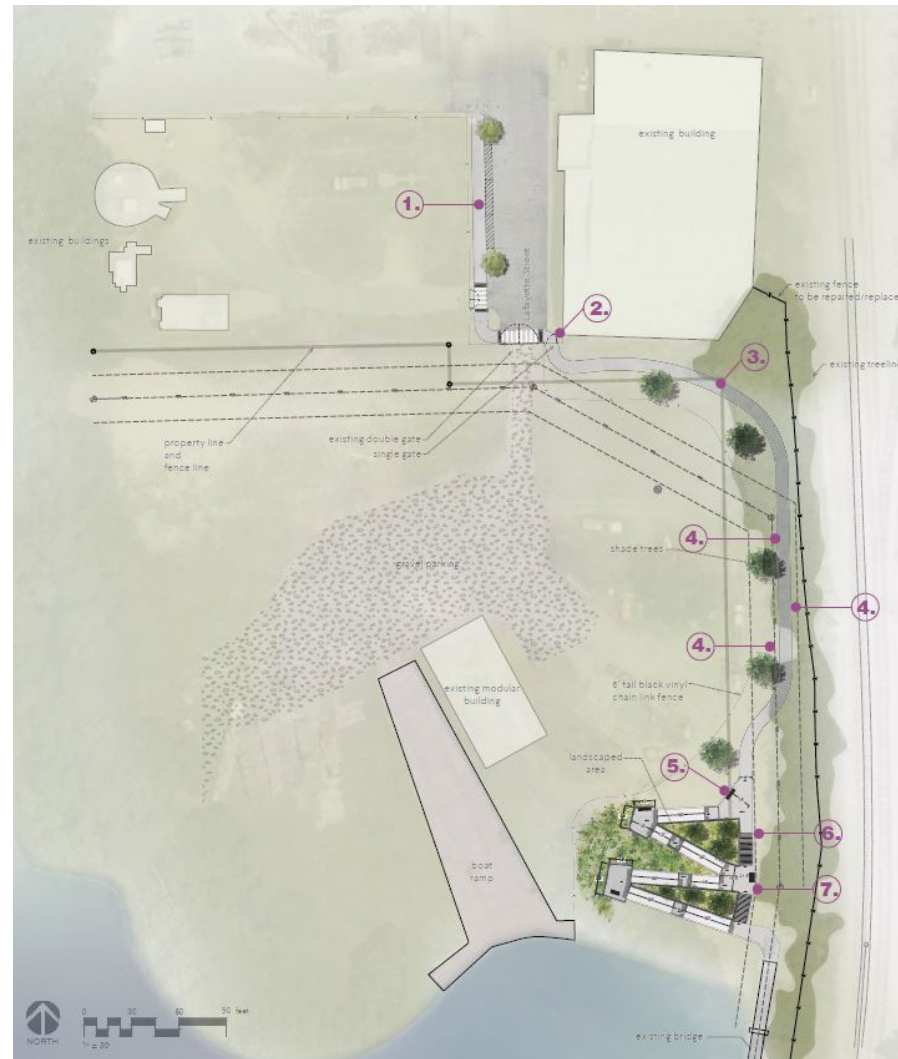
**1. ACCESSIBLE PARKING:** A designated parking area on Lafayette St. will accommodate at minimum one ADA accessible van and one car. This parking will provide new access to the trail from Downtown.



**2. ENTRY SIGN:** This sign welcomes visitors to the Lion's Club Pathway and to the Alabama River not only in braille but also with high contrast, simple to read, large text. This and other signs will be placed such that someone who needs to can put their face relatively close to it in order to read.



**3. ROPE-GUIDED WALK:** This path will have rope guides along the inside of the trail, allowing for independent exploration. Explanation of how to understand the rope guides is also key and will be introduced at the trailhead. The outside edge can be distinguished with wayfinding tiles, this will also allow runners to spread out along the trail if needed.



**4. MUSIC ALONG THE PATH:** Outdoor musical instruments along the path will bring to life the Urban Ecology of the River: Birdsong, Trainsong and Xylophone (Yoursong).



**5. STORYTELLING BENCH:** A bench can be built into the retaining wall for resting and sensing the river. There is an opportunity to name the bench in someone's or in several people's honor. This could be a special destination for a family, a group or lone visitor. From here, imagine if you could hear the Harriott's bell or caliope.



**6. SENSORY GARDEN:** Plantings in ramp terraces will be fragrant and soft to the touch: such as lambs ear or chocolate mint! Perhaps there is a local group that would adopt this stretch of trail and introduce horticulture therapy, or tend these special plants as a way to maintain a more garden-like set of plantings along the trail.



**7. RIVER ECOLOGY MOSAIC:** A tactile mosaic can portray the plant and animal life that make their home along the banks of the Alabama River such as: heron, turtle, fish, mice, rabbits, foxes, snakes and more. This could be located at the bottom of the trail near the bridge.

**\*SMART CANE READY:** Currently, one of the most exciting things to the visually impaired who rely on canes is the Smart Cane. As a Smart City, Montgomery could introduce such technology into our Riverfront Trail system.



### Site Plans and Details

The City contracted with Goodwyn Mills, and Cawood to plan, design, engineer, and cost estimate this segment of the Riverfront Trail for future construction.

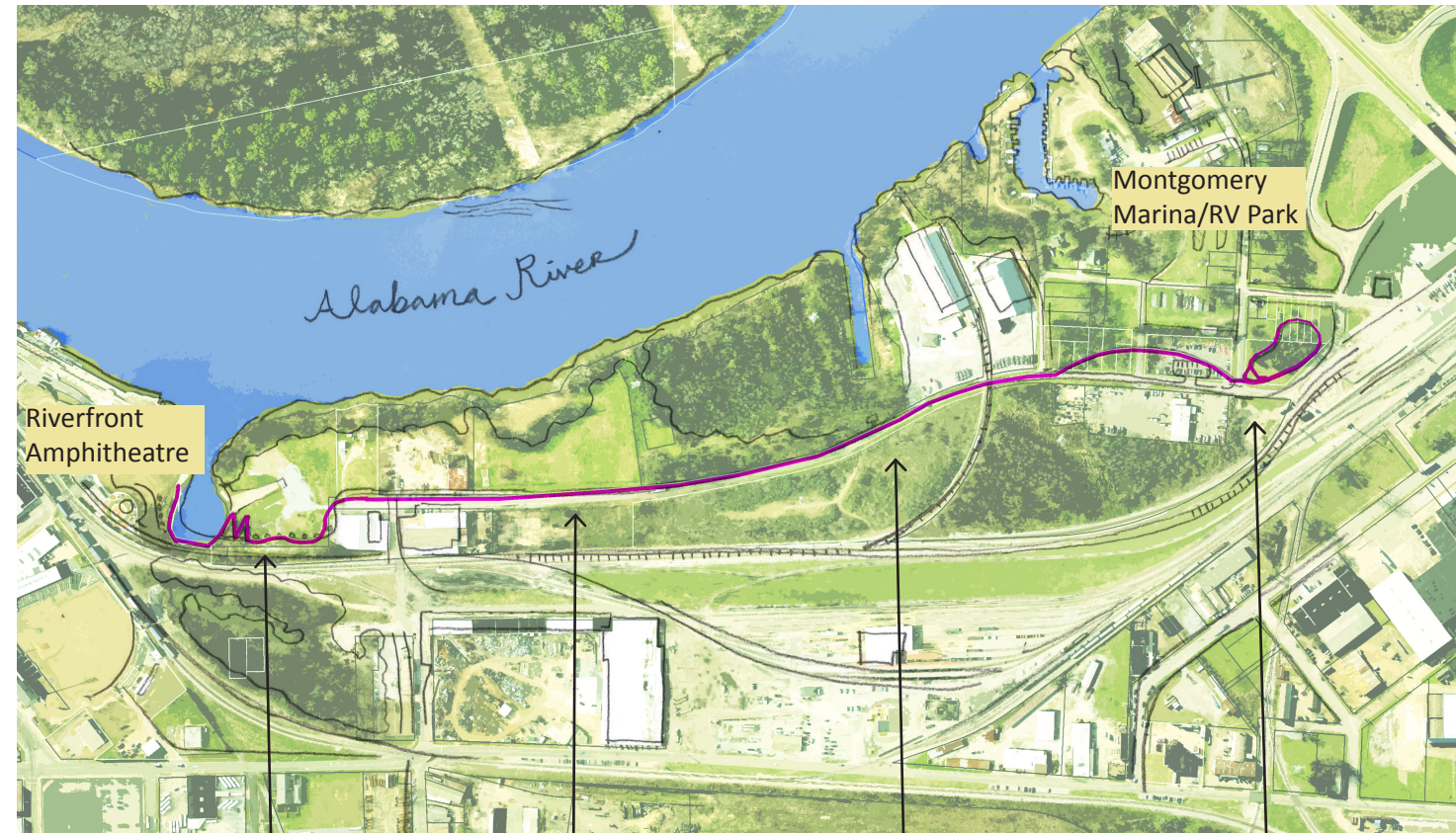
# Riverfront Greenway Trail Extension North: From Cypress Inlet to Shady Street Trailhead Park



## EXTENDING THE RIVERFRONT TRAIL THROUGH PUBLIC-PRIVATE PARTNERSHIP

The Montgomery Lions Club Children’s Sensory Trail will serve as a gateway to an additional 0.6 miles of Riverfront trail to the north of Downtown. The proposed connection from the new bridge across Cypress Inlet, completed in 2019, along Lafayette Street to a new trailhead and park at Shady St. will create wonderful new opportunities for children of all ages to get outside and enjoy nature in the City. This long-term plan was underscored in Envision Montgomery 2040, the Comprehensive Plan.

This proposed new stretch of bike/pedestrian trail will be accessible both at Lafayette and Railroad streets downtown, and at the northern end at Shady Street by Capitol City Oyster Bar and Montgomery Marina/ RV Resort just off the Northern Blvd.



**LIONS CLUB CHILDREN’S SENSORY TRAIL**  
This special stretch of trail is designed especially for sight-impaired children to provide wonderful tactile and auditory experiences alongside the Alabama River.



**PROTECTED BIKE / PEDESTRIAN TRAIL ALONG LAFAYETTE**  
Most of the trail will be constructed as an 8’ wide multi-modal, bike and pedestrian path to facilitate strolls and races alike.



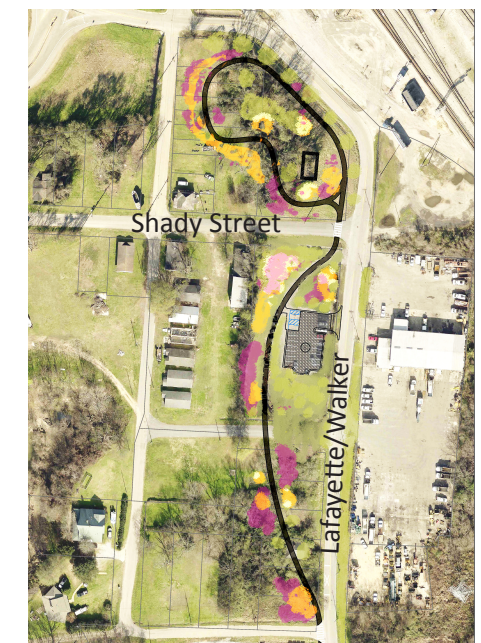
**RIVER ECOLOGY**  
The trail will enhance habitat at the River’s edge. There is opportunity all along the route for community and educational partnerships.



**SHADY ST. TRAILHEAD**  
The Shady St. Trailhead will feature bike parking and a picnic shelter, while the trail makes a continuous loop around the park for smooth travel to and from Downtown.

## HELP MAKE THIS RIVERFRONT GREENWAY EXTENSION POSSIBLE!

The new Shady St. Trailhead will feature accessible car and bike parking at the northern end, a trailhead kiosk, picnic shelter and bird and butterfly pollinator plantings. It can grow to include public art and interpretive signs along the bike + pedestrian route. It will be designed to enhance the environment and ecological potential of the land and teach citizens about Montgomery’s unique riparian ecology. The sketch below shows the proposed trailhead parking and walk/bike loop.



This Trailhead and Park is scheduled to start construction on City-owned parcels in 2021.